



Stoneacre
Properties



Gibson Drive., Leeds, LS15 9BG

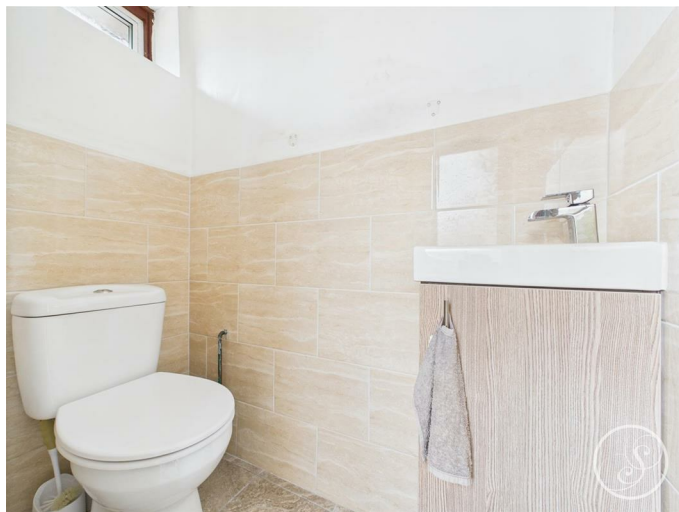
£240,000

Offered for sale is this spacious three bedroom semi detached family home. The property is situated in a popular area and has easy access to local amenities including shops, schools and Temple Newsam park. Comprising: entrance porch, guest wc, lounge/diner, kitchen, three bedrooms and a shower room. Externally the property has gardens to the front and rear. In addition there is off street parking and a garage.

Entrance Porch

Door leading into lounge/diner. Door leading into guest wc.

Guest WC



Fitted with a wc and vanity wash hand basin.

Lounge/Diner



Staircase leading to first floor. Under stairs storage cupboard. Central heating radiators. Window to front. Patio to rear leading out to the garden.

Kitchen



Fitted with a range of wall and base units with work surfaces over incorporating a sink and drainer unit. Gas cooker point. Space for fridge/freezer. Plumbing for washing machine. Pantry. Door to side and window to rear.

First Floor Landing

Window to side. Access into loft.

Bedroom One



Built in storage. Window to front. Central heating radiator.

Bedroom Two

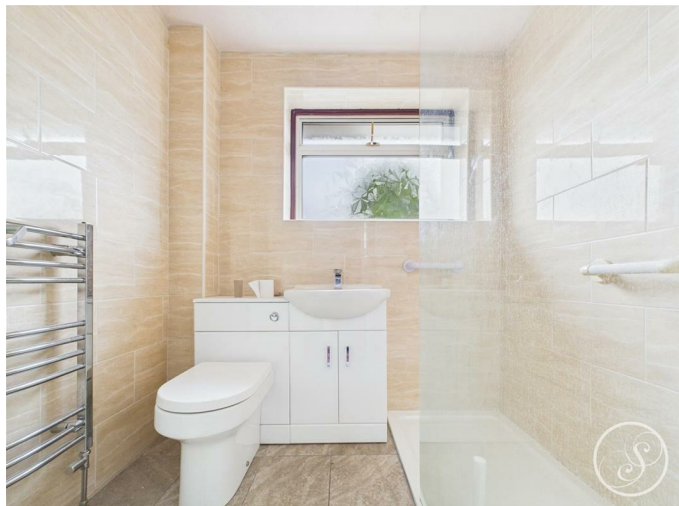


Window to rear. Central heating radiator.

Bedroom Three

Window to front. Central heating radiator.

Shower Room



Fitted with a walk in shower, vanity wash hand basin and wc. In addition there is tiling a heated towel rail and a window to the rear.

External



Gardens to both the front and rear

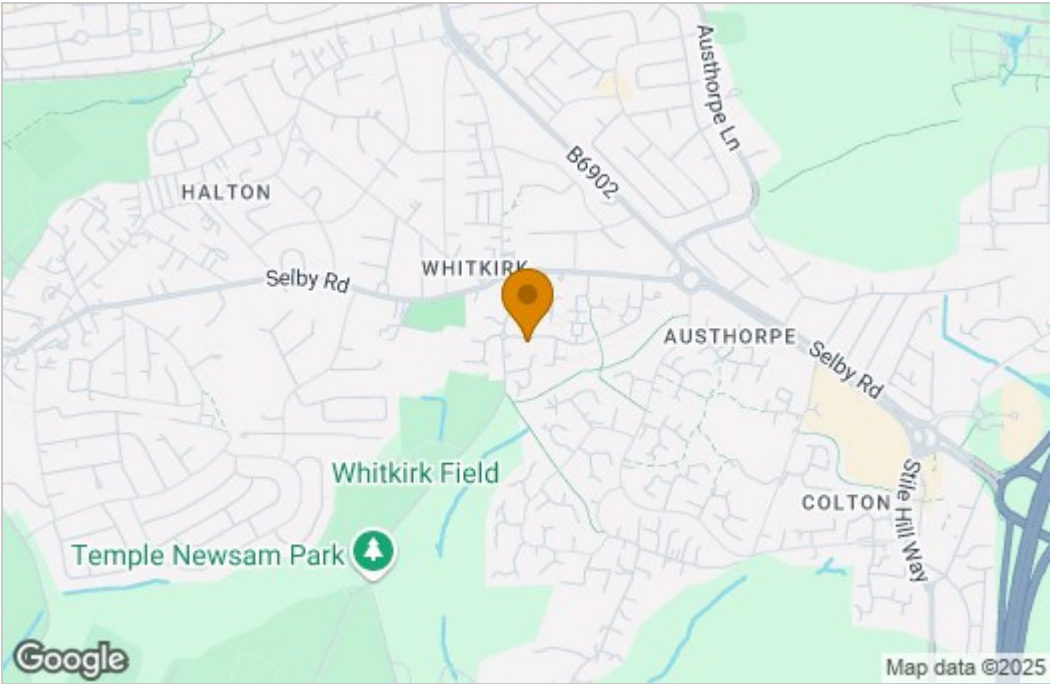
Garage

Up and over door. Door to rear.

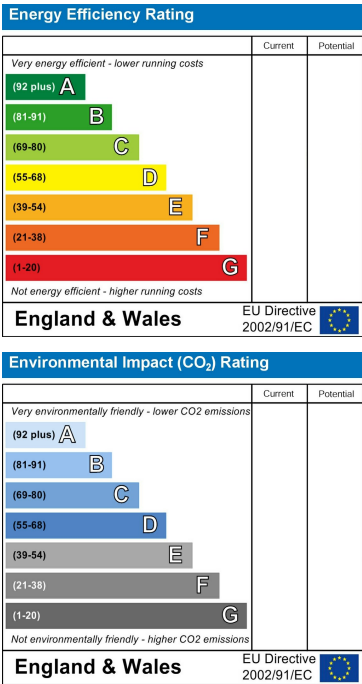
Floor Plan



Area Map



Energy Efficiency Graph



These particulars, whilst believed to be accurate are set out as a general outline only for guidance and do not constitute any part of an offer or contract. Intending purchasers should not rely on them as statements of representation of fact, but must satisfy themselves by inspection or otherwise as to their accuracy. No person in this firms employment has the authority to make or give any representation or warranty in respect of the property.

